

TECH

The tech story install dept. at American Bagger Magazine did not follow True-Track instructions, please read through the instructions in their entirety before installing and keep an eye out for **corrections noted in red.**

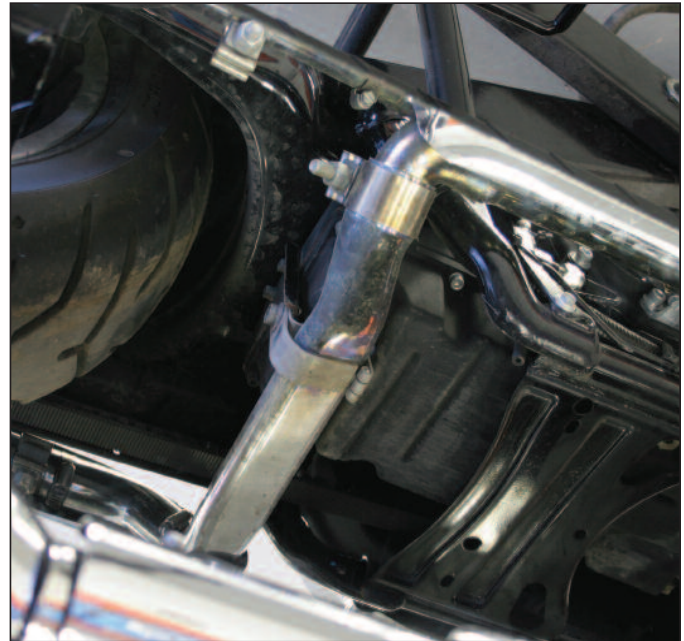
True-Track '09 Touring Stabilizer

Staff Report – Photos by the Maverick Camera Crew

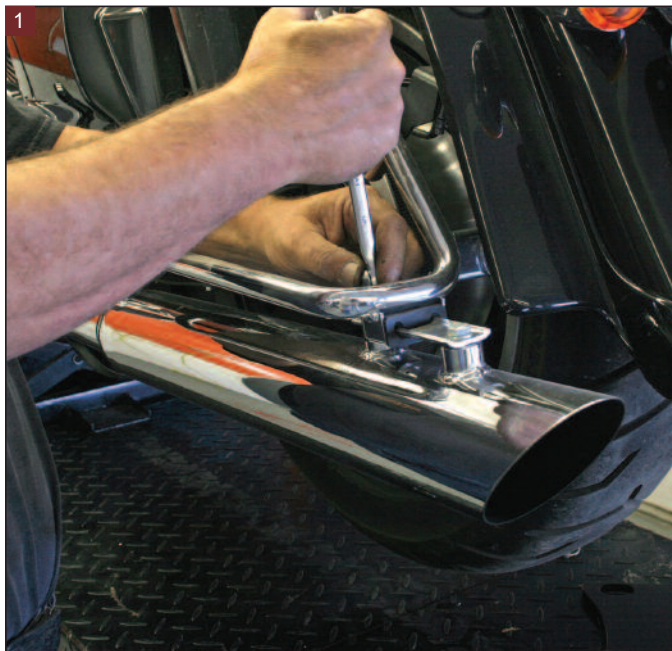
The all-new touring frame introduced by Harley-Davidson® accepts the all-new True-Track '09 Touring anti-wobble instrument that reduces, if not entirely eliminates the tendency for high-speed wobble that is associated with FLH motorcycles. The '09 True-Track Touring Stabilizer easily installs with common hand tools in about an hour.



Here is the True-Track Touring model for '09 Harley-Davidson® FLH models.



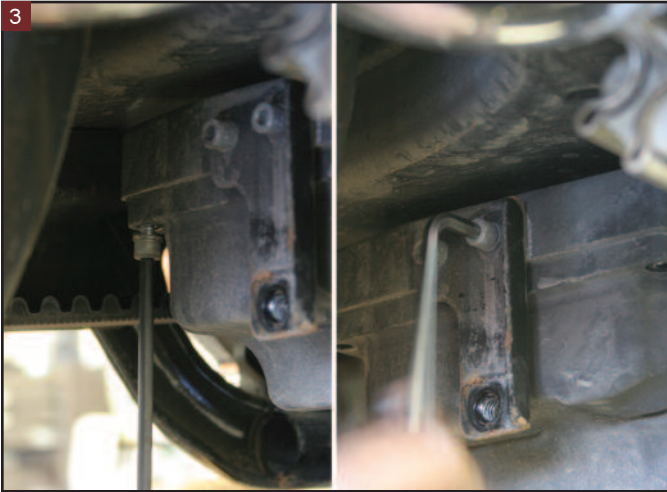
Looking at the reflected image of the underside of an '09 FLH reveals the crossover pipe that runs from the right side to the left. The '09 True-Track will mount between the pipe and the oil pan.



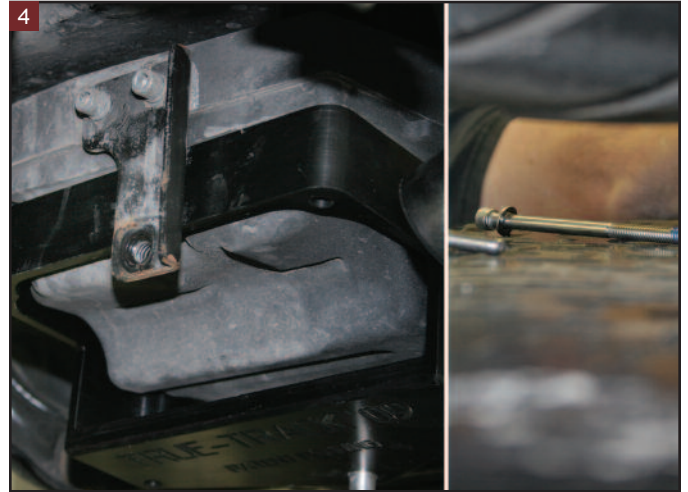
1 Remove the left side exhaust pipe and its support strap that is attached to the oil tank.



2 The center mounted support strap simply swings out of the way to allow the exhaust pipe and muffler to come off as a single piece.



Loosen and remove the five rearmost oil pan bolts. Then loosen the two exhaust strap hanger mount bolts.



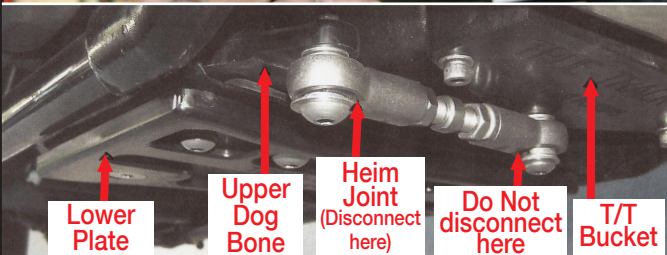
Slip the True-Track rear piece up and around the oil tank as shown. Dab some Threadlocker on the bolts.



Thread the stainless steel bolts into the oil pan holes.



Tighten the bolts completely at this time using a cross pattern so everything gets tightened equally.



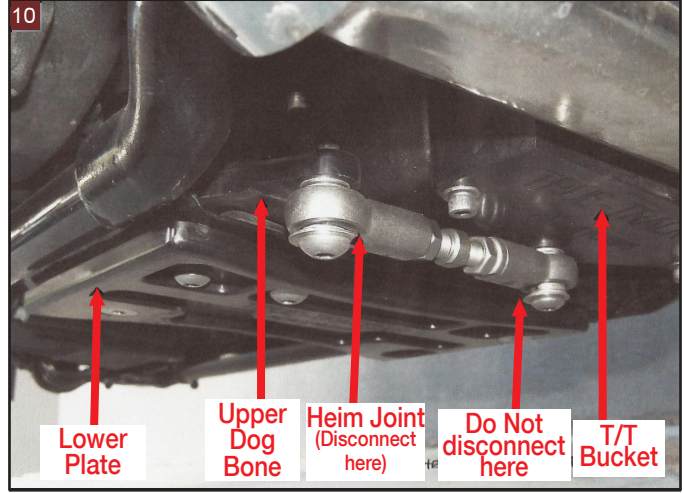
Bolt the '09 True-Track anchor plate to the cross member of the frame. Do not entirely remove heim joint see disconnect photo #10.



Threadlocker should be used on these bolts too.



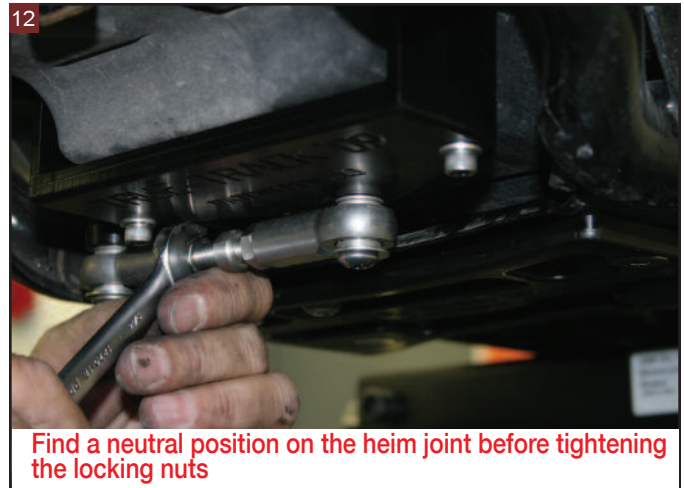
Tighten the anchor-plate hardware equally as was done with the rear True-Track piece.



Apply Threadlocker to the bolt of the heim joint that connects the pan-mounted bracket to the anchor plate mounted on the cross member.



Mount the heim joint on the pins and insert the two bolts into each end.



Find a neutral position on the heim joint before tightening the locking nuts

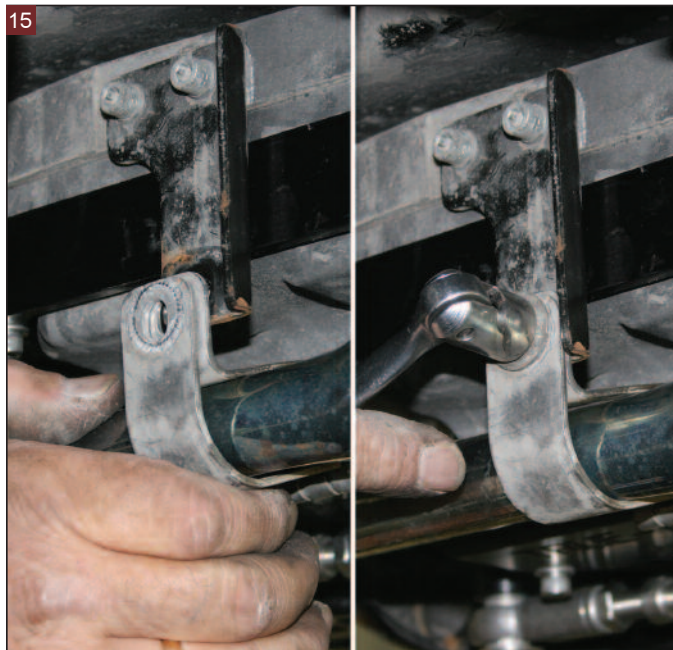
Now tighten the heim link locking nuts.



The '09 True-Track is now installed and ready for the open road.



Slip the left side muffler and head pipe back into place on the right side pipe spigot.



Reinstall the exhaust hanger onto the hanger bracket at this time.



Install the slip-on muffler hardware and tighten it.

AFTER



TRUE-TRACK, INC.
'09 Touring Stabilizer
Part #20-00-09

818.623.0697
www.true-track.com

The True-Track installation is only apparent if you take this Harley-Davidson FLH for a ride. It is virtually undetectable otherwise. This motorcycle is now wobble resistant.